



***Brand New Affordable
Apartment Homes
for Families with a
Developmentally Disabled Member***



Special Features and Amenities

- Affordable One, Two and Three-Bedroom Apartment Homes
- Seventeen Apartments Reserved for Households with a Developmentally Disabled Member
- Fully-Equipped Kitchens
- Patio or Balcony
- Community Clubhouse with Computer Center
- Computer Training, Financial Education, ESL and Art Classes Available
- Central Heat and A/C
- Convenient Laundry Center
- Section 8 Vouchers Welcome
- Great Location Close to Shopping, Dining and Public Transportation

Primavera

FAMILY APARTMENTS

1060 Meadows Drive
Calexico, CA 92231

www.VillaPrimaveraApts.com

If you or someone you know is interested in an apartment designated for persons with developmental disabilities call:

858-514-7015

Southern California Housing Collaborative

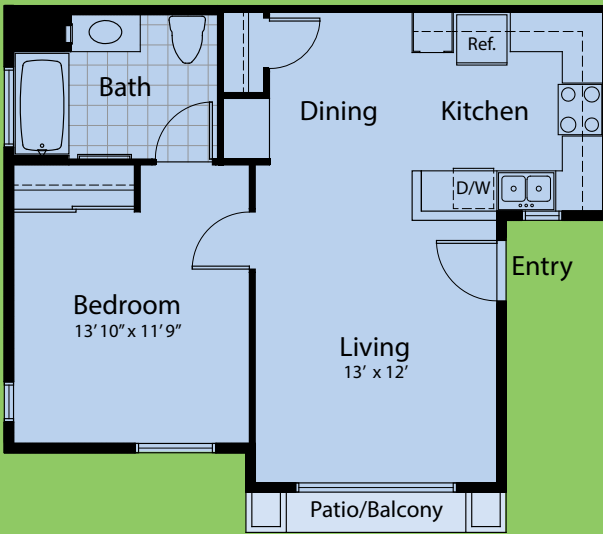
All others call:

760-268-2002

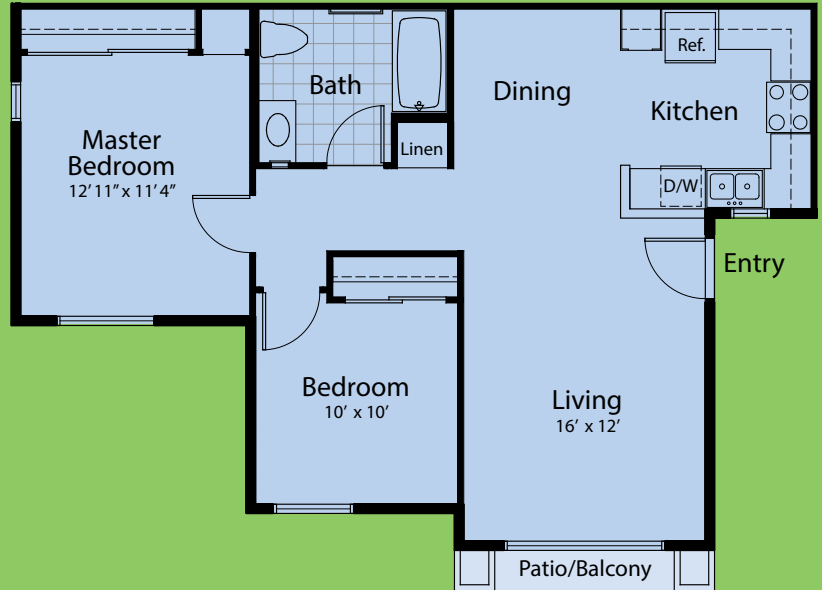
TTY/TDD: 711

Some features may not be available in all plans. Income and other restrictions apply. See leasing staff for details.

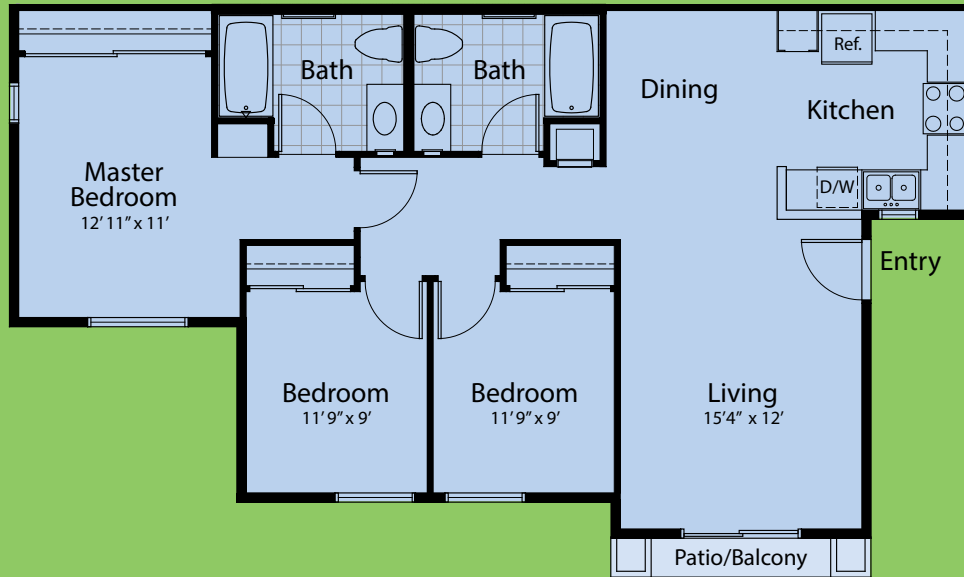




One Bedroom • One Bath
633 sq. ft.



Two Bedrooms • One Bath
854 sq. ft.



Three Bedrooms • Two Baths
1,087 sq. ft.

Primavera

FAMILY APARTMENTS

1060 Meadows Drive
Calexico, CA 92231

Phone: 760-268-2002

TTY/TDD: 711

www.VillaPrimaveraApts.com

